



Ivy House,  
Betws Y Coed LL24 0SN



**IWAN M WILLIAMS**  
ESTATE AGENTS • GWERTHWYR TAI

# Ivy House,

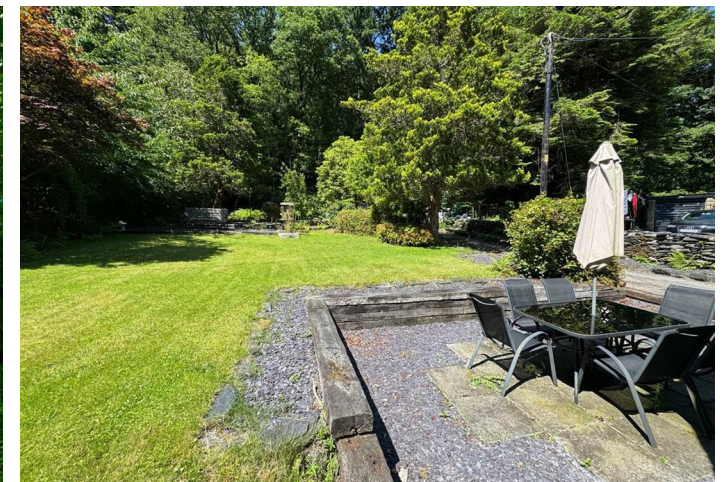
Betws Y Coed LL24 0SN

£525,000

A beautifully presented and sympathetically refurbished five-bedroom detached character home, set in generous gardens and enjoying a peaceful woodland backdrop within the Snowdonia National Park.

Occupying a delightful hamlet setting, Ivy House is a substantial double-fronted stone residence in a picturesque and accessible location. Surrounded by mature woodland and nestled within a designated Area of Outstanding Natural Beauty, the property enjoys a rural outlook whilst remaining conveniently located for access to Betws-y-Coed village.

Tastefully refurbished in recent years, retaining its period charm while introducing modern comforts including treble glazing and central heating throughout. The well-planned layout includes two attractive reception rooms, each featuring wood-burning stoves set within original fireplaces, creating cosy and welcoming spaces for family life and entertaining. A stylish dining room, also with feature fireplace, traditional fitted kitchen complete with exposed ceiling timbers. Five comfortable bedrooms arranged over the upper floor, each enjoying leafy outlooks and natural light. The accommodation is complemented by quality finishes and a warm, inviting feel throughout.



## Location

This charming home is ideally positioned for those seeking a peaceful lifestyle close to nature, with footpaths, riverside walks, and mountain scenery all on the doorstep. The property is situated within ancient woods. The renowned village of Betws-y-Coed, with its range of shops, caf  s, and transport links, lies within easy reach, as does the wider Snowdonia National Park and North Wales coast.

### Accommodation:

The accommodation affords: (approximate measurements only)

#### Covered Front Entrance:

Composite double glazed door leading to:

#### Small Entrance Lobby:

Staircase leading off to first floor level; coving.

#### Lounge: 14'6" x 10'11" (4.43m x 3.35m)

Recess fireplace with cast iron stove; slate hearth and timber lintel above; large triple glazed bay window overlooking front enjoying views; radiator; coved ceiling; timber flooring.

#### Dining Room: 15'2" x 10'9" (4.64m x 3.28m)

Large triple glazed bay window overlooking front with views; coved ceiling; recessed fireplace surround with slate and timber lintels above; radiator; door leading to rear lobby area with understairs storage cupboard.

#### Rear Sitting Room: 10'9" x 12'9" (3.29m x 3.89m)

Feature inglenook fireplace with glazed fronted stove; slate hearth; radiator; TV point; uPVC double glazed windows to side elevation. Door leading to:

#### Downstairs Cloakroom:

Low level WC; vanity wash basin; tiling; uPVC double glazed window overlooking side; ladder style towel rail; tiled flooring; cloak hooks.

#### Kitchen: 11'9" x 11'7" (3.59m x 3.54m)

Fitted range of base and wall units with complementary worktops; peninsula unit with worktop over; built-in electric meters; 1 1/2 bowl sink with mixer tap; space for fridge freezer; integrated oven; ceramic hob with overhead stainless steel and glass extractor hood; plumbing for automatic washing machine; radiator; rear external door leading on to rear patio; side door; exposed beam ceiling; tiled floor.



## First Floor:

### Landing:

uPVC double glazed window.

Bedroom 1: 14'2" x 11'1" (4.32m x 3.38m)

uPVC triple glazed window overlooking front enjoying views; radiator.

### En-suite Shower Room:

Shower enclosure; vanity wash basin; low level WC; ladder style heated towel rail; wall tiling; velux window.

Bedroom 2: 10'8" x 8'7" extending to 15'1" by doorway (3.26m x 2.63m extending to 4.62m by doorway)

Cast iron former fireplace surround; recess wardrobe; uPVC triple glazed window overlooking front; double panelled radiator.

### Recessed Walk-In Drying/Linen Room:

uPVC double glazed window; lights connected.

Bedroom 3: 6'11" x 7'9" plus 6'2" x 7'7" (2.13m x 2.37m plus 1.89m x 2.33m)

Sub-divided into 2 areas, bedroom area with radiator and dressing area with uPVC double glazed window overlooking side; built-in cupboard and storage.

Bathroom: 7'9" x 6'2" (2.38m x 1.9m)

3 piece suite comprising new shower; vanity wash basin; low level WC; heated towel rail; double glazed window; built-in storage cupboard to recess; tiling; extractor fan.

### Rear Landing:

Steps leading down to Bedroom 4 and Study (This could be easily reinstated into one big bedroom if required).

Bedroom 4: 9'4" x 5'10" (2.86m x 1.78m)

uPVC double glazed window overlooking side; radiator; built-in storage; access to roof space.

Study: 8'2" x 6'6" (2.51m x 1.99m)

uPVC double glazed window overlooking garden; built-in wardrobe and store cupboard; radiator.



## Outside

Ivy House stands within its own private grounds comprising a sizeable front garden with stone boundary walling and slate path, a sheltered rear lawn, mature borders and trees, and an attractive slate-paved patio ideal for outdoor dining. A private driveway offers ample off-road parking and leads to a detached outbuilding or garage, suitable for storage.

## Services:

Mains water and electricity are connected. LPG gas central heating. Septic tank drainage. New combined central heating has been installed

## Viewing Llanrwst

By appointment through the agents Iwan M Williams, 5 Denbigh Street, Llanrwst, tel 01492 642551, email [enq@iwanmwilliams.co.uk](mailto:enq@iwanmwilliams.co.uk)

## Council Tax Band

Conwy County Borough Council tax band - E


## Directions:

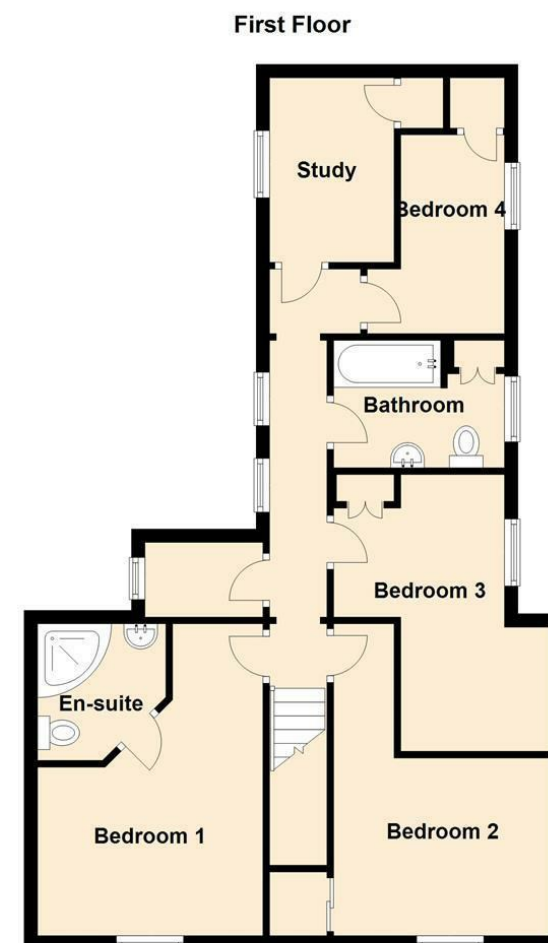
Proceed from Llanrwst to Betws y coed, at the Waterloo bridge turn left up the A5 for a short distance, turn immediately right onto the A470 towards Dolwyddelan passing the Fairy Glen Hotel on the left hand side, over the bridge turn sharp towards A470 towards Dolwyddelan and Ivy House will be viewed on the right hand side opposite a small humpback bridge.

## Proof Of Funds

In order to comply with anti-money laundering regulations, Iwan M Williams Estate Agents require all buyers to provide us with proof of identity and proof of current residential address. The following documents must be presented in all cases: **IDENTITY DOCUMENTS:** a photographic ID, such as current passport or UK driving licence. **EVIDENCE OF ADDRESS:** a bank, building society statement, utility bill, credit card bill or any other form of ID, issued within the previous three months, providing evidence of residency as the correspondence address.



Energy Efficiency Rating		
	Current	Potential
<i>Very energy efficient - lower running costs</i>		
(92 plus) <b>A</b>		
(81-91) <b>B</b>		
(69-80) <b>C</b>		69
(55-68) <b>D</b>		
(39-54) <b>E</b>		
(21-38) <b>F</b>	32	
(1-20) <b>G</b>		
<i>Not energy efficient - higher running costs</i>		
<b>England &amp; Wales</b>	EU Directive 2002/91/EC	



Floorplans are for identification purposes only and not to scale. Where measurements are shown, these are approximate and should not be relied on. Sanitary ware and kitchen fittings are representative only and approximate to actual shape, position and style. No liability is accepted in respect of any consequential loss arising from the use of this plan. Reproduced under licence from William Morris Energy Assessments. All rights reserved.  
Plan produced using PlanUp.

These particulars are intended only as a guide to prospective Purchasers to enable them to decide whether enquiries with a view to taking up negotiations but they are otherwise not intended to be relied upon in any way of for any purpose whatever and accordingly neither their accuracy nor the continued availability of the property is in any way guaranteed and they are furnished on the express understanding that neither the Agents nor the Vendor are to become under any liability or claim in respect of their contents. The Vendor does not hereby make or give or do the Agents nor does the Partner of the Employee of the Agents have any authority as regards the property of otherwise. Any prospective Purchaser or Lessee or other person in any way interested in the property should satisfy himself by inspection or otherwise as to the correctness of each statement contained in these Particulars. In the event of the Agent supplying any further information or expressing any opinion to a prospective Purchaser, whether oral or in writing, such information or expression of opinion must be treated as given on the same basis as these particulars.

## Iwan M Williams Estate Agents

5 Denbigh Street  
Llanrwst  
Conwy  
LL28 0LL

Tel: 01492 642551  
Email: [enq@iwanmwilliams.co.uk](mailto:enq@iwanmwilliams.co.uk)  
Web: <https://www.iwanmwilliams.co.uk>

